

*We are human*

**in.vent**  
DIAGNOSTICA GMBH

# Product List

Human Biomaterials  
2024/25



**in.vent** Diagnostica GmbH  
Neuendorfstraße 17  
16761 Hennigsdorf  
Germany

[www.inventdiagnostica.de](http://www.inventdiagnostica.de)



*We are human*

# Product List

Human Biomaterials  
2024/25

- PRICE LIST -



# Contact & Ordering Information



**General Contact**  
**+49 (0)3302 55 199 0**  
**info@inventdiagnostica.de**

Neuendorfstraße 17 | 16761 Hennigsdorf | Germany

**Contact for your Orders**  
 +49 (0)3302 55 199 250  
 sales@inventdiagnostica.de

**We keep you up to date!**  
 www.inventdiagnostica.de

# Table of Content

Contact and Ordering Information . . . . .	4
Table of Content . . . . .	5
Company Overview . . . . .	6
Ethical Principles and Values . . . . .	7
Product Overview . . . . .	8
in.vent Services . . . . .	10
in.vent Study Site . . . . .	12
in.vent Clinical Services . . . . .	14
<b>1. IVDR compliant sample sets: Class D</b>	<b>16</b>
<b>2. Human Biomaterials – Normals</b>	<b>20</b>
<b>3. Cell Culture Materials</b>	<b>24</b>
<b>4. Quality Controls &amp; Standard Materials</b>	<b>26</b>
<b>5. Preanalytics – Anticoagulants &amp; Interfering Substances</b>	<b>30</b>
<b>6. Fertility &amp; Pregnancy</b>	<b>32</b>
<b>7. Disease State</b>	<b>34</b>
a. Autoimmune Diseases . . . . .	.34
b. Infectious Diseases . . . . .	.36
c. Thyroid Diseases . . . . .	.38
d. Allergy . . . . .	.40
e. Diabetes . . . . .	.42
f. Inflammation . . . . .	.43
g. Oncology . . . . .	.44
h. Drugs of Abuse . . . . .	.45
<b>8. Human Tissues &amp; Specialities</b>	<b>46</b>
Index . . . . .	.48
Imprint . . . . .	.50

*We are human*

**in.vent Diagnostica** is a biomedical company with its headquarter at the biotech campus in Hennigsdorf, near Berlin. We are active in the field of ethical correct procurement of Human Biomaterials since 2001.

**in.vent** is focussed on the customised procurement of Human Biomaterials. Further fields of activities are the production of biomarkers of human origin, quality controls, standard materials and clinical studies.

**in.vent** is Europe's leading specialist for ethical correct procurement of high quality Human Biomaterials. State-of-the-art production of biomolecules of human origin as well as challenging contract development of in-vitro diagnostics (IVD) are core competences of our team.

**in.vent's** clients profit from the team of high qualified scientists with extensive and deep knowledge of Human Biomaterials and its thorough understanding of assay development.

**in.vent** fully complies with ethical correct behaviour and strictly follows ethical guidelines and values which are updated on a regular basis.

**in.vent** always strives to achieve highest satisfaction of customers.

**in.vent** is certified according to ISO 9001 and ISO 13485.

**We like to meet your challenges.**

# Ethical Principles and Values of in.vent

**in.vent** is committed to the highest international ethical and legal standards.

This statement underlines our firm commitment to ethical correct behaviour of all our doing.

1. The Declaration of Helsinki<sup>1</sup> & Declaration of Taipei<sup>2</sup> as developed by the World Medical Association state the ethical principles that provide guidance to physicians and other participants in medical research involving human subjects research on Health Databases, Big Data and Biobanks are basis of our guidelines.
2. in.vent only cooperates with networks, physicians, clinics and other organisations that comply with these standards.
3. Further standards are based on the requirements of IVDR 2017/746.<sup>3</sup>
4. The notes of the German Central Ethical Committee<sup>4</sup> and the German Ethics Board regarding biobanks for research purposes are taken into consideration as well as far as they are applicable.
5. Furthermore ICH-GCP guidelines<sup>5</sup> (International Conference on Harmonisation of Technical Requirements for Registration of Pharmaceuticals for Human Use – Good Clinical Practice) are taken into account whenever applicable.

- Human Biomaterials are valuable biomaterials for research, development and production of IVDs, companion diagnostics, pharmaceutical and clinical trials.
- Human Biomaterials can be leftovers, tissues and body fluids from operations or from laboratory diagnostics as well as donations procured for medical or scientific reasons.
- All donations are preceded by statements according the ethical correctness of the projects of an International Review Board (IRB)<sup>6</sup> resp. ethical boards and committees, whenever applicable.
- The use of Human Biomaterials is part of the personal rights of each single donor, therefore we commit to obtain informed donor consents in writing whenever it is of relevance. Donors may have limited knowledge in medical and pharmaceutical topics, therefore all signing of informed donor consents is preceded by detailed explanations to the donor. These explanations include all purposes, ways and lengths of use and all detailed information regarding the use of the donated biomaterials.
- All use of donated materials was, is and will be restricted to the purposes respectively the application the donor agreed to.
- All personal data referring to donated Human Biomaterials are pseudonymised resp. anonymised before being transferred to third parties.
- The use of all personal data is restricted and confidential according all applicable laws and regulations and is closely monitored.
- The collection, storage and the use of data is subject of the Declaration of Taipei. Individuals have the right to request and to be provided with information about their data at any time<sup>7</sup>.
- in.vent maintains a Quality Management System certified according to ISO 13485<sup>8</sup> and ISO 9001<sup>9</sup>.
- The compliance with the above mentioned standards is kept under strict surveillance.
- in.vent trains and informs its employees to ensure compliance with these standards on a regular basis.

1 <https://www.wma.net/policies-post/wma-declaration-of-helsinki-ethical-principles-for-medical-research-involving-human-subjects>

2 <http://www.ak-med-ethik-komm.de/docs/WMA-Declaration-of-Taipei-2016.pdf>

3 <https://eur-lex.europa.eu/legal-content/EN/TXT/HTML/?uri=CELEX:32017R0746&from=EN>

4 <https://www.ce-richtlinien.eu/in-vitro-diagnostika>

5 <http://www.ich.org/products/guidelines.html>

6 <http://www.feki.com/index.php?ic=10>

7 <http://www.ak-med-ethik-komm.de/docs/WMA-Declaration-of-Taipei-2016.pdf>

8 <https://www.mdc-ce.de/medizinprodukte/leistungen/qm-zertifizierung/iso-13485.html>

9 <https://www.mdc-ce.de/gesundheitswesen/leistungen/qm-zertifizierung/iso-9001.html>

# Product Overview

## Panels & Controls

We offer small volume samples and Controls, prospective collections and customised Panels for developing your assays. Our team provides a wide range of different biomarkers and controls and several matrices.

- standard delivery of panels and controls: ambient temperatures or lyophilised or blue ice or dry ice with or without temperature monitoring systems
- standard storage of panels and controls: according to constitution of sample
- instruction for thawing: reconstitution instruction delivered with lyophilised controls

## Bulks

Large volume single donations of normal and disease state donors are part of our portfolio of native human biomaterials. We offer standard and customised bulks used for academic research, studies, development and production for non-therapeutical use.

- standard delivery of bulks: on dry ice
- standard storage of bulks: -18°C
- constitution of samples: liquid frozen
- instruction for thawing: perpendicular stored at 4 to 10°C, gently mixing every 0.5h

## Pools

All our materials were gained, processed and verified in a way that is ethically and legally compliant for the purposes of diagnostic research and development, production and quality assurance for non-therapeutical use.

- standard delivery of pools: on dry ice
- standard storage of pools: -18°C
- constitution of samples: liquid frozen
- instruction for thawing: perpendicular stored at 4 to 10°C, gently mixing every 0.5h

## Collectives

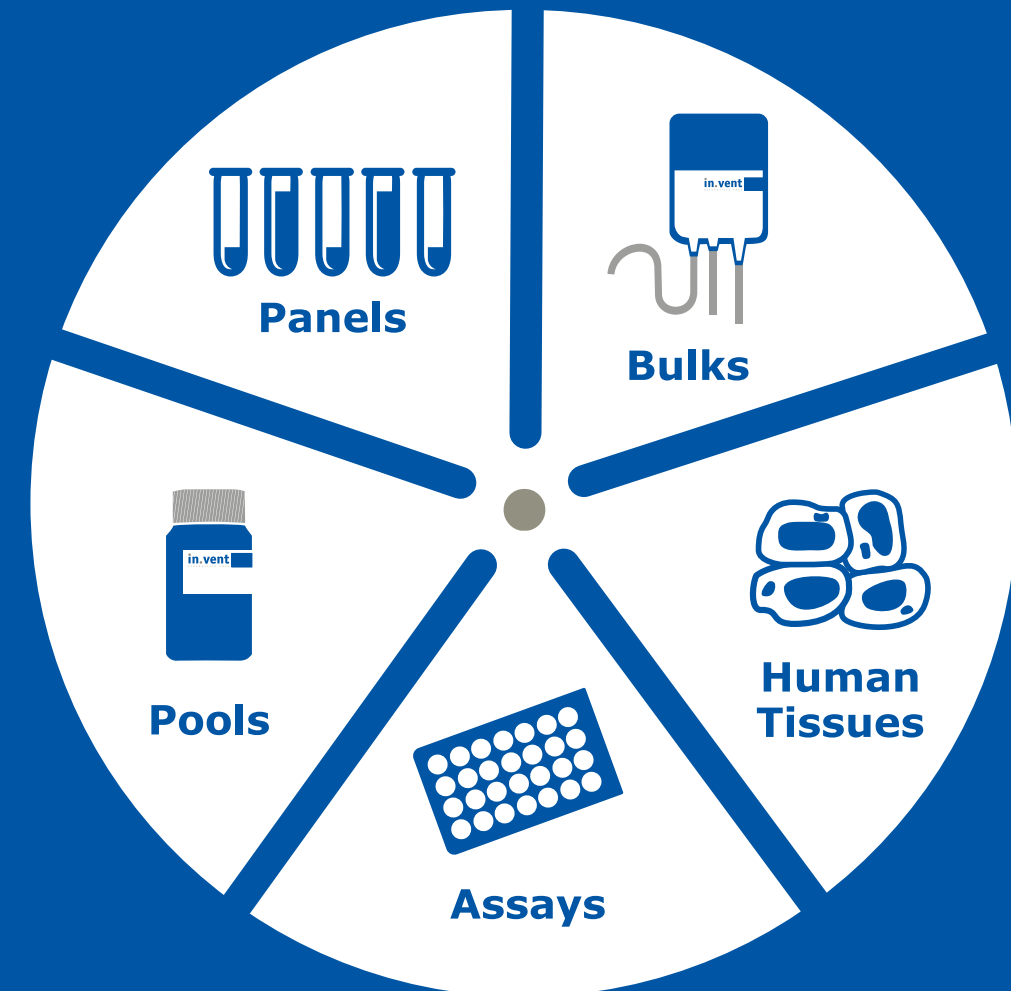
We compile collectives for you based on indication, parameter, or group of patients.

## Human Tissues

Human Tissues are a high potential resource for extraction of many different proteins. Fresh frozen Tissues are essential for biomarker research and successful in-vitro diagnostic development. All Tissues provided by **in.vent** are of the highest quality and have been meticulously validated. Tissues provided by in.vent are suitable for Extraction of various parameters.

## Assays Development

The assay development of in.vent consists of order – and in-house development. These coated tubes, ELISA and rapid tests are based on the detection by luminescence, enzyme or nanoparticles and allows the determination of proteins, antibodies or PCR products from urine, serum or whole blood.



**The complexity of your requirements is our standard.**

– PRICE LIST –



# in.vent Services

## Precision at Every Step – Your Research, Our Commitment

At in.vent Diagnostica, we are committed to providing exceptional service across a spectrum of needs in the biomedical field. Our service portfolio is designed to accommodate a range of requirements from basic storage solutions to advanced processing, ensuring that every client finds exactly what they need for precise and efficient handling of biological materials.

### Comprehensive Technical Services:

Our expertise extends to the precise filling of biomaterials, a service we proudly offer. Our capabilities range from handling small volumes starting from µl-range up to 5ml per vial to large-scale fillings in the litre range, accommodating a variety of project scales with precision and care.

We also specialize in the freeze-drying of human biomaterials, having developed optimized lyophilization programs tailored for a diverse array of materials such as serum, urine, stool, and tissue extracts. For clients looking to dry such materials, we offer services using our lyophilizer, which accommodates small to medium-scale projects on a surface area of 1.4 m<sup>2</sup>.

Filling & Lyophilisation Services		
Product No.	Trade Name	Content
830000001	Filling of Human liquids	from minute volumes up to 5 ml
830000002	Filling of Human liquids	from 5 ml to 1000 ml
830000003	Lyophilisation Service	1000 - 5000 pcs
Customized Storage Services		
Product No.	Trade Name	Temperature
830000004	Single Unit Storage	stored at 2-8°C
830000005	Pallet Storage	stored at 2-8°C
830000006	Single Unit Storage	stored at <-15°C
830000007	Pallet Storage	stored at <-15°C
830000008	Single Unit Storage	stored at -80°C

We provide professional, temperature-controlled storage services, offering conditions maintained at 2-8°C and below -15°C. With the opening of our new warehouse, we now accommodate large-scale storage on Euro pallets. Our facilities are equipped with a double cooling system and an integrated emergency power supply to consistently maintain optimal temperatures. Additionally, all our warehouses are monitored around the clock to ensure the utmost reliability.

## Precision in Every Drop, Integrity in Every Sample

### Advanced Serum and Plasma Processing Services:

For nearly 25 years, in.vent has perfected a suite of processes for the treatment of human serum and plasma. We are pleased to make these expert processes available as a service to handle your materials with the utmost care and precision.

Inactivation Services		
Product No.	Trade Name	Content
830000009	Heat inactivation	Human Serum or Plasma
830000012	Photodynamic virus inactivation	Human Plasma
Depletion Services		
Product No.	Trade Name	Content
830000013	Immunoglobulin	Human Serum or Plasma
830000014	Steroid hormones	Human Serum or Plasma
830000015	Vitamin B12	Human Serum or Plasma
830000010	Delipidation	Human Serum or Plasma
830000011	Defribination	Human Plasma
Further modifications		
Product No.	Trade Name	Content
830000016	Pool production	10 components
830000017	Sterile Filtration	minimum 1000ml



Experience the in.vent Diagnostica difference. We don't just meet standards; we set them. Elevate your project with services that anticipate and adapt to your research needs, ensuring breakthrough results every time.

Contact us to customize your Service Experience

- PRICE LIST -





# in.vent Study Site

## Preanalytics Perfected - Your Project, Our Mission

At in.vent Diagnostica's Study Site, you are empowered with full control over preanalytic conditions, ensuring that every aspect of your project is managed to your exact specifications. Discover unparalleled precision and customization in a facility designed to advance your research.



Depending on your project assignment, we look for both healthy and disease state donors for small or large volume donations.

### You will have full autonomy over:

- **Donor Selection** based on age, gender, BMI, and pre-existing medical conditions.
- **Donor Preparation** for specific conditions like sitting or lying, fasting, medication use, and time of day to align perfectly with your study requirements.
- **Processing Conditions** including time, speed, and temperature to ensure optimal sample integrity.
- **Choice of Matrices** such as K2/K3EDTA or citrate plasma, Li-Heparin plasma, serum, urine, faeces, saliva, swabs, capillary blood, and whole blood to suit your research needs.
- **Disease State Selection**, which serves the focus of your projects on specific health conditions, including Allergy, Diabetes Type I/II, Pregnancy, and Rheumatoid Arthritis.

Perfectly designed for conducting matrix comparisons, stability tests, performance studies, and more. We look forward to preparing a customized offer for you.

**We look forward to preparing a customized offer for you.**



**Fresh blood service  
within 24 h within EU**



**Clinical Studies  
according to IVDR**



**Customised Service –  
According to your  
specifications**

– PRICE LIST –



# in.vent Clinical Services

## The key to CE: in.vent Clinical Services (ICS) the IVD CRO

**in.vent** Clinical Services is a specialist department of in.vent Diagnostica GmbH, Europe's leading experts for human biosample procurement.

We assist our clients in the planning, setup, conduct, and evaluation of studies with in-vitro diagnostic devices (IVDs). Our services cover all project phases from start to finish.

Our scope is defined by your individual requirements. Small pre-admission studies are covered just as complete **IVDR-compliant** clinical performance studies.

We will guide you through the entire way towards CE-certification and cover your clinical validation needs for Class B, C and D devices.

## ICS is everything you need for your validation study in a single service package. All in one!

### Clinical Studies:

The main obstacle between you and the CE-mark is the Clinical Performance Study. Our experts will plan, conduct, and evaluate these challenging studies for you, complying with IVDR, ISO 20916, and all other applicable guidelines.

### in.vent Study Centre:

Benefiting from our own study centre, we can freely adapt processes according to your needs. We have complete control over pre-analytical conditions, entailing maximum reliability of clinical data.

### Samples:

No study without samples! in.vent Diagnostica GmbH is the No. 1 source for procurement of human biomaterials. We can arrange prospective collections globally and according to the requirements of your product's intended purpose.

### Compliance:

Your studies will be designed according to all applicable standards. Obtaining ethical and regulatory clearance before study start is our day-to-day business. On top, we are certified according to ISO 9001 and ISO 13485.

## Diagnostic Studies from Start to Finish



## Pricing

Our standard service offer comes in **five levels** (Sprint, Basic, Basic+, Pro, and Premium) which differ in project complexity. Please see below for details and prices. Product-specific deviations from these standards are of course possible and encouraged.

	ICS Sprint	ICS Basic	ICS Basic+	ICS Pro	ICS Premium
Retrospective sample set*	✓	✓	✓	✓	✓
Study plan	✓	✓	✓	✓	✓
Study evaluation	✓	✓	✓	✓	✓
Study report	✓	✓	✓	✓	✓
Prospective sample set**		✓	✓	✓	✓
Ethical clearance			✓	✓	✓
Sample size upgrade 500***				✓	✓
Sample size upgrade 1000****					✓
IVDR-compliance warranty				✓	✓

\* Leftover samples with limited clinical background. 100 negative, 100 positive samples.

\*\* Samples collected project-specifically from individuals representing the intended target population of the index test. 150 prospective samples are included in this set.

\*\*\* Number of prospective samples increased to 500

\*\*\*\* Number of prospective samples increased to 1000

Service level	Price	Timeline
ICS Sprint	48,400 €	3 months
ICS Basic	95,900 €	4.5 months
ICS Basic+	115,800 €	6 months
ICS Pro	204,000 €	9 months
ICS Premium	322,600 €	12 months



# IVDR compliant sample sets: Class D

# 1

The **in.vent** sample sets are ready to use for the validation of your Class D devices according to the Common Technical Specifications 2009/108/EC. The sets are designed and assembled to generate the necessary clinical data according to IVDR 2017/746.

## Sample sets for IVDR compliant validation according to Common Technical Specifications 2009/108/EC

Product No.	Trade Name	Description
<b>Diagnostic sensitivity, HBV</b>		
820005000	HBV 100	Annex VI, Table 4, Diagnostic sensitivity positive specimen, 100 samples, HBV naturally infected
820005001	HBV 100	Annex VI, Table 5, Diagnostic sensitivity positive specimen, 100 samples, HBV positive
820005002	HBV 200	Annex VI, Table 4, Diagnostic sensitivity positive specimen, 200 samples, HBV positive
820005003	HBV 300	Annex VI, Table 3, Diagnostic sensitivity positive specimen, 300 samples, HBV positive
820005004	HBV 400	Annex VI, Table 2, Diagnostic sensitivity positive specimen, 400 samples, HBV positive
820005005	HBV-vaccinated 100	Annex VI, Table 4, Diagnostic sensitivity positive specimen, 100 samples, HBV vaccinated
840001001	HBV 400 incl. fresh	Annex VI, Table 1, Diagnostic sensitivity positive specimen, 400 samples, (incl. 25 same day fresh samples), HBV positive
<b>Diagnostic sensitivity, HCV</b>		
820005006	HCV 100	Annex V, Table 5, Diagnostic sensitivity positive specimen, 100 samples, HCV positive
820005007	HCV 300	Annex V, Table 3, Diagnostic sensitivity positive specimen, 300 samples, HCV positive
820005008	HCV 400	Annex V, Table 2, Diagnostic sensitivity positive specimen, 400 samples, HCV positive
840001000	HCV 400 incl. fresh	Annex V, Table 1, Diagnostic sensitivity positive specimen, 400 samples, (incl. 25 same day fresh samples), HCV positive
<b>Diagnostic sensitivity, HIV-1</b>		
820005009	HIV-1 100	Annex III, Table 5, Diagnostic sensitivity positive specimen, 100 samples, HIV-1 positive
820005010	HIV-1 200	Annex III, Table 3, Diagnostic sensitivity positive specimen, 200 samples, HIV-1 positive
820005011	HIV-1 400	Annex III, Table 1, 2, Diagnostic sensitivity positive specimen, 400 samples, HIV-1 positive
820005012	HIV-1 50	Annex III, Table 4, Diagnostic sensitivity, Positive specimen, 50 samples, HIV-1 Ag positive
<b>Diagnostic sensitivity, HIV-2</b>		
820005014	HIV-2 100	Annex III, Table 1, 2, 5, Diagnostic sensitivity positive specimen, 100 samples, HIV-2 positive

Product No.	Trade Name	Description
<b>Diagnostic Specificity, Blood donors</b>		
820005020	Blood donors 5000	Annex III, V, VI, Table 1, Diagnostic specificity, unselected blood donors, 5000 samples
820005021	Blood donors 1000	Annex III, V, Table 2, Diagnostic specificity, unselected blood donors, 1000 samples
820005022	Blood donors 500	Annex III, V, VI, Table 5, Diagnostic specificity, unselected blood donors, 500 samples
820005023	Blood donors 500 incl. clinical	Annex VI, Table 4, Diagnostic specificity, unselected blood donors: 480 samples, hospitalised patients: 20 samples
820005024	Blood donors 200	Annex III, V, VI, Table 4, Annex V, Table 3, Diagnostic specificity, unselected blood donors, 200 samples
820005025	Blood donors 100	Annex III, V, VI, Table 5, Diagnostic specificity, unselected blood donors, 100 samples
<b>Diagnostic Specificity, Hospitalised</b>		
820005027	Hospitalised donors 200	Annex III, V, VI, Table 1, 2, 4, Annex III, V, Table 3, Diagnostic specificity, hospitalised patients, 200 samples
<b>Diagnostic Specificity, Interfering specimen</b>		
820005028	Interfering 50	Annex VI, Table 4, Diagnostic specificity, potentially interfering substances, 50 samples
<b>Cross-reactivity</b>		
820005040	Cross-reactive 100 incl. pregnant	Annex III, V, VI, Table 1, Cross-reactivity, potentially cross reacting specimen, 100 samples, (incl. pregnant)
820005041	Cross-reactive 100 excl. pregnant	Annex III, V, VI, Table 2, Cross-reactivity, potentially cross reacting specimen, 100 samples, (excl. pregnant)
820005042	Cross-reactive 200 pregnant	Annex III, V, VI, Table 2, Cross-reactivity, potentially cross reacting specimen, pregnant 200 samples
820005043	Cross reactive	Annex III, V, Table 4, Annex VI, Table 3, 5, Cross-reactivity, potentially cross reacting specimen, 50 samples
<b>Whole system failure rate</b>		
820005050	HBV DNA low positive 100	Annex VI, Table 5, Whole system failure rate, 100 samples, HBV DNA low positive
820005051	HCV RNA low positive 100	Annex V, Table 5, Whole system failure rate, 100 samples, HCV RNA low positive
820005052	HIV RNA low positive 100	Annex III, Table 5, Whole system failure rate, 100 samples, HIV-1, HIV-2 RNA low positive



– PRICE LIST –



To validate a Class D self-test according to IVDR 2017/746 and Common Technical Specifications 2009/108/EC the application needs to be tested in lay use. We offer the recruitment of infected and not infected lay users to help you fulfil the additional requirements for self-tests.

Product No.	Trade Name	Description
<b>Self-tests, Diagnostic sensitivity</b>		
840001010	Self-test known positive HBV 200	Annex VI, Table 6, Self-test known HBV positive, 200 participants
840001011	Self-test known positive HCV 200	Annex V, Table 6, Self-test known HCV positive, 200 participants
840001012	Self-test known positive HIV 200	Annex III, Table 6, Self-test known HIV positive, 200 participants
<b>Self-tests, Diagnostic specificity</b>		
840001013	Self-test high risk 200	Annex III, V, VI, Table 6, Self-test high risk, 200 participants
840001014	Self-test unknown status 400	Annex III, V, VI, Table 6, Self-test unknown status, 400 participants
<b>Self-tests, Result interpretation</b>		
840001015	Self-test result interpretation 100	Annex III, V, VI, Table 6, Self-test result interpretation, 100 participants

The **in.vent** matrix equivalence sets are ready to verify the performance of your device with multiple sample types according to Common Technical Specifications 2009/108/EC.

Product No.	Trade Name	Description
<b>Matrix equivalence</b>		
840001020	Matrix equivalency set 25:25 HBV	Annex I, General Common Specification, Part I, Matrix equivalence HBV, 25 positive, 25 negative samples
840001021	Matrix equivalency set 25:25 HCV	Annex I, General Common Specification, Part I, Matrix equivalence HCV, 25 positive, 25 negative samples
840001022	Matrix equivalency set 25:25 HIV-1	Annex I, General Common Specification, Part I, Matrix equivalence HIV-1, 25 positive, 25 negative samples

**Further requirements? Send your inquiry via:**

[ics@inventdiagnostica.de](mailto:ics@inventdiagnostica.de)

## ICS – in.vent Clinical Services

Diagnostic Studies according to IVDR 2017/746

### All in one!

- ✓ Studies
- ✓ Samples
- ✓ Ethical clearance
- ✓ Regulatory security

**ICS is your One-Stop Shop for Clinical Performance Studies.**

**in.vent** Diagnostica GmbH  
 Neuendorfstraße 17  
 16761 Hennigsdorf  
 Germany

[www.ics.bio](http://www.ics.bio)

# Human Biomaterials – Normals

## 2

The **in.vent Panels of Normal Donors** are designed for the use throughout the whole value chain of in-vitro diagnostic test kits, e.g. for R&D and Quality Control Departments.

The **in.vent Panels of Normal Donors** are used for Production Purposes. The Samples consist of native Human Biomaterial with no additives.

**Normal donors** are defined to be “normal” according the German Transfusion Act. The following criteria have to be fulfilled for donation of blood, not including plasmapheresis:

Criterion	Requirement
1. Anamnesis with initial physical examination by a physician	
2. Leucocytes, Erythrocytes, Thrombocytes, mean corpuscular volume (MCV)	normal
3. Hemoglobin or Hematokrit	female: HB > 125g/l or HKT > 38% male: HB > 135g/l or HKT > 40%
4. Age	18-68 years, special criteria for exceptions > 68 years
5. Weight	minimum 50kg
6. Blood pressure	systolic: 100-180mm Hg diastolic: < 100mm Hg
7. Pulse	no clinical signs, frequency 50-100/min
8. Temperature	no fever
9. Clinical global Impression	no disease
10. Skin at Puncture Site	no lesion

Furthermore there are several criteria for excluding potential donors e.g.: neurologic diseases, cardiovascular diseases, malignant neoplasm, allergies. Potentially infected donors are excluded as well in case they are infected with HIV I or HIV II, HBV, HCV, HTLV type I or type II, protozoonosis diseases or syphilis. Potential donors who consume drugs, abnormal volumes of alcohol or abuse therapeutics are excluded as well as further high risk groups. Further details are listed in the document named above.

## Blood Products by in.vent

### Whole Blood

Whole Human Blood from standard blood donation including all physiologically occurring blood components like cells, proteins and other components.

Further Specifications:

- venous, arterial or capillary
- with anticoagulant additives like lithium heparin, EDTA, sodium citrate
- selection of particular donor groups (e.g. age, gender and lifestyle habits)

We offer fresh blood service with **express delivery** refrigerated or fresh frozen. Blood drawings are available in small, medium and large volumes.

### Plasma

Centrifuged whole blood without blood cells (erythrocytes, thrombocytes, leukocytes).

Examples:

- sodium citrate plasma for coagulation tests
- lithium heparin plasma for clinical chemistry
- sodium fluoride plasma for determination of lactate and glucose

### Serum

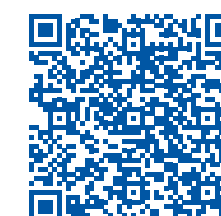
True human serum off the clot: naturally coagulated blood, no anticoagulants.

Samples for a variety of parameter analysis:

- minerals
- hormones
- proteins
- vitamins
- enzymes



– PRICE LIST –





# Human Biomaterials – Normals

## 2

### Normal Human Sera

The **in.vent** Pools, Bulks and Collectives of Normal Human Sera are suitable for Production of Standards and Control Materials. Our True Serum off the Clot (OTC) is collected from blood that is allowed to coagulate naturally after collection. It has not been exposed to any anticoagulant.

Product No.	Trade Name	Unit
810000100	Human super healthy donors Collective	100pcs / collective
810000101	Normal Human Serum donors Collective	100pcs / collective
810000102	Normal Human Serum OTC, Pool	10L
810000103	Normal Human Serum OTC	100ml or 1000ml
810000104	Normal Human Serum, converted	100ml or 1000ml
810000105	Normal Human Serum, converted (CPD)	100ml or 1000ml
810000106	Normal Human Serum, converted, Pool	50L
810000107	Normal Human Serum, converted (CPD), Pool	50L
840000006	Normal Human Serum OTC, female donors	100ml or 1000ml
840000007	Normal Human Serum OTC, male donors	100ml or 1000ml
820000100	Normal Human Serum OTC bottled Single Donation	150 - 250ml
820000101	Normal Human Serum OTC, female Single Donation	150 - 250ml
820000102	Normal Human Serum OTC, male Single Donation	150 - 250ml



### Normal Human Plasma

The **in.vent** Pools, Bulks and Collectives of Normal Human Plasma are suitable for Production of Standards and Control Materials.

Product No.	Trade Name	Unit
810000108	Normal Human Citrate Plasma	100ml or 1000ml
810000109	Normal Human Citrate Plasma (CPD)	100ml or 1000ml
810000110	Normal Human K2EDTA Plasma	10ml or 250ml
810000111	Normal Human K3EDTA Plasma	10ml or 250ml
810000112	Normal Human Lithium-Heparin Plasma	100ml or 1000ml
840000001	Normal Human Citrate Plasma, female donors	100ml or 1000ml
840000002	Normal Human Citrate Plasma, male donors	100ml or 1000ml
840000003	Normal Human Citrate Plasma (CPD), female donors	100ml or 1000ml
840000004	Normal Human Citrate Plasma (CPD), male donors	100ml or 1000ml
840000005	Normal Human Citrate Plasma (CPD), low Triglycerides	100ml or 1000ml
820000103	Normal Human K2EDTA Plasma Single Donation	150 - 280ml
820000104	Normal Human K3EDTA Plasma Single Donation	150 - 280ml
820000105	Normal Human Citrate Plasma Single Donation	450 - 850ml
820000106	Normal Human Citrate Plasma, female Single Donation	450 - 850ml
820000107	Normal Human Citrate Plasma, male Single Donation	450 - 850ml
820000108	Normal Human Citrate Plasma (CPD) Single Donation	150 - 280ml
820000109	Normal Human Citrate Plasma (CPD), female Single Donation	150 - 280ml
820000110	Normal Human Citrate Plasma (CPD), male Single Donation	150 - 280ml
820000111	Normal Human Lithium-Heparin Plasma Single Donation	150 - 280ml

### Other Normal Human Biomaterials

The **in.vent** Single Donations of other Normal Human Biomaterials are suitable for Production of Standards and Control Materials.

Product No.	Trade Name	Unit
820000112	Normal Human Faeces Single Donation	1g
820000113	Normal Human Saliva Single Donation	1ml
820000114	Normal Human Urine Single Donation	1ml
820000115	Red blood cell concentrate - high quality - Single Donation	150 - 350ml
820000116	Red blood cell concentrate Single Donation	150 - 350ml

**Further requirements? Send your inquiry via:**

[inquiry.inventdiagnostica.de](mailto:inquiry.inventdiagnostica.de)

– PRICE LIST –



# Cell Culture Materials

# 3

The **in.vent** Pools and Bulks of Normal Human Sera and Plasma – Cell Culture Materials are intended to be used in Production Departments for Standards or Controls and for Cell Culture Techniques.

Cell Cultures are an indispensable tool in biomedical research. They play a decisive role in constantly expanding our understanding of diseases and developing new diagnostic and therapeutic procedures. **in.vent** has therefore expanded its portfolio to include Cell Culture Materials of human origin. These are obtained in an ethically correct manner under GMP conditions. A large number of quality control tests, such as proof of sterility, extensive infectiological tests or proof of freedom from endotoxins, guarantee the unrestricted usability of the materials in cell culture media.



## Human Serum

Product No.	Trade Name	Unit
810000200	Normal Human AB Serum OTC, male donors, Pool	50L
810000201	Normal Human AB Serum OTC, male donors	100ml
810000202	Normal Human AB Serum, male donors, converted Pool	50L
810000203	Normal Human AB Serum, male donors, converted	100ml
810000204	Normal Human AB Serum, male donors, converted (CPD) Pool	50L
810000205	Normal Human AB Serum, male donors, converted (CPD)	100ml
840000008	Normal Human Serum OTC, blood type AB, mixed gender	100ml
820000200	Normal Human AB Serum OTC, mixed gender	150 - 250ml
820000201	Normal Human AB Serum, male converted (CPD) Single Donation	150 - 250ml
820000202	Normal Human AB Serum, male converted Single Donation	450 - 850ml

## Human Plasma

Product No.	Trade Name	Unit
810000206	Normal Human AB Citrate Plasma, male donors, Pool	50L
810000207	Normal Human AB Citrate Plasma, male donors	100ml
810000208	Normal Human AB Citrate Plasma (CPD), male donors, Pool	50L
810000209	Normal Human AB Citrate Plasma (CPD), male donors	100ml
820000203	Normal Human AB Citrate Plasma (CPD), male Single Donation	150 - 250ml
820000204	Normal Human AB Citrate Plasma, male Single Donation	450 - 850ml

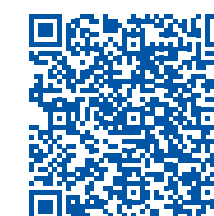
## Other Human Material

Product No.	Trade Name	Unit
820000205	Human Platelet Concentrate, blood type AB, Single Donation	150 - 350ml
820000206	Human Platelet Concentrate, mixed blood type, Single Donation	150 - 350ml

**Further requirements? Send your inquiry via:**

[inquiry.inventdiagnostica.de](mailto:inquiry.inventdiagnostica.de)

– PRICE LIST –





# Quality Controls & Standard Materials

# 4

**in.vent** Quality Controls are designed to be used in Laboratory Quality Control Settings, in Quality Departments and R&D Units. They are applicable for solving tasks of precision, accuracy or correctness of in-vitro diagnostic assay measurements and analyte components throughout the whole value chain of in-vitro diagnostic test kits or assays.

**in.vent** Quality Controls are suitable for Internal Quality Control and also for External Quality Assurance such as Proficiency Testing and External Quality Assessment Schemes (EQAS) in Medical Laboratories. All Quality Controls consist of true native human materials or artificial matrices and are as identical to patient samples as possible. They are free of any additives unless the analytes or regulations require different production schemes. All Quality Controls are tested with CE-certified test systems and found negative or non-reactive for HIV I/II Ab, HBs Ag and HCV Ab.

## CE-certified Control

Product No.	Trade Name	Matrix
81000300	In.QualiCheck Calprotectin Control Level 1 QC 2.1.20	Faeces
81000301	In.QualiCheck Calprotectin Control Level 2 QC 2.1.21	Faeces
81000302	In.QualiCheck Calprotectin Control Level 3 QC 2.1.22	Faeces
81000303	In.QualiCheck Pocalcitonin (PCT) Control Level 1 QC 2.1.16	Serum
81000304	In.QualiCheck Pocalcitonin (PCT) Control Level 2 QC 2.1.17	Serum
81000305	In.QualiCheck Pocalcitonin (PCT) Control Level 3 QC 2.1.18	Serum
81000306	In.QualiCheck Prostate Specific Antigen (PSA) Control QC 2.1.8	Serum



## Examples of Analytes for your customised and individually developed Quality Control:

### in.vent Individual Quality Controls

in.vent Individual Quality Controls are produced according to detailed customer requirements. They are useable for internal Laboratory Performance Monitoring as well as for Proficiency Testing. Production of CE-certified Controls available.

Product No.	Trade Name	Matrix
<b>Autoimmunity</b>		
840000400	Anti-Extractable nuclear antigens (ENA) Control	Serum
840000402	Antinuclear antibodies (ANA) Control	Serum
840000403	Antiphospholipid syndrome (APS) Control	Serum
840000404	Autoimmune Dermatitis Control	Serum
840000405	Autoimmune endocrinopathy Control	Serum
840000406	Diabetes mellitus Control	Serum
840000407	Gluten sensitive enteropathy Control	Serum
840000408	Hepatopathy Control	Serum
840000409	Myasthenia gravis Control	Serum
840000410	Paraneoplastic neuropathy Control	Serum
840000411	Peripheral neuropathy Control	Serum
840000412	Rheumatoid Arthritis Control	Serum
840000413	Vasculitis and Glomerulonephritis Control	Serum
<b>Infectiology</b>		
840000420	Cytomegalivirus (CMV) Plasma PCR Control	Serum
840000421	Enterovirus Faeces PCR Control	Faeces
840000422	Hepatitis A Virus (HAV) antibodies Control	Serum
840000423	Hepatitis E Virus (HEV) antibodies Control	Serum
840000424	Human Herpes Virus 6 (HHV-6) Plasma PCR Control	Plasma
840000425	Human Papilloma Virus 18 (HPV 18) Plasma PCR Control	Swabs
840000426	Human Papilloma Virus 18 (HPV 18) Swabs PCR Control	Serum
840000427	Measles Plasma PCR Control	Serum
840000428	Mumps Plasma PCR Control	Serum
840000429	Rabies Plasma PCR Control	Serum
840000430	Rotavirus Faeces PCR Control	Serum
840000431	Rubella Plasma PCR Control	Serum
840000432	Varizella Zoster Virus (VZV) Plasma PCR Control	Serum

- PRICE LIST -



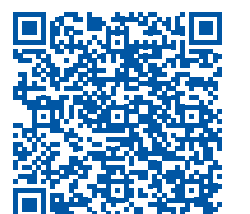
Product No.	Trade Name	Matrix
<b>Endocrinology</b>		
840000440	Adrenal & Pituitary gland Control	Serum
840000441	Aldosterone Control	Serum
840000442	Bone metabolism Control	Serum
840000443	Calcium metabolism & special thyroid Control	Serum
840000444	Cortisol Salivary Control	Saliva
840000445	Fertility Control	Serum
840000446	Hematopoietic growth factors Control	Serum
840000447	Pancreatic & Gastrointestinal Control	Serum
840000448	Thyroid autoantibodies Control	Serum
840000449	Thyroid hormones Control	Serum
840000450	Virilization Control	Serum
<b>Medical Drugs</b>		
840000460	Antibiotics, Cytostatics & Cardiac glycosides Control	Serum
840000461	Anticoagulants Control	Serum
840000462	Antiepileptics, Cardiac glycosides & Antiasthmatic Control	Serum
840000463	Immunosuppressants EDTA Blood Control	EDTA-Plasma
840000464	Paracetamol Control	Serum
840000465	Salicylic acid Control	Serum
<b>Gastroenterology</b>		
840000470	Calprotectin & Elastase faecal Control	Faeces
840000471	Helicobacter pylori antigen Faecal Control	Faeces
840000472	Hemoglobine (Hb) – Haptoglobine complex faecal Control	Faeces
840000473	Occult blood Faecal Control	Faeces
<b>Immunology</b>		
840000480	Gammopathies Control	Plasma
840000481	IgG subclasses Control	Serum
840000482	Immunophenotyping Control	Whole Blood
840000483	Interferon Gamma Release Control	Whole Blood
<b>Pregnancy Diagnostics</b>		
840000490	1st Trimester Pregnancy Control	Serum
840000491	2nd Trimester Pregnancy Control	Serum
840000492	Preeclampsia Control	Serum
<b>Allergy</b>		
840000500	Inhalation Allergy Control	Serum
840000501	Insects Allergy Control	Serum
840000502	Nutrition Allergy Control	Serum

Product No.	Trade Name	Matrix
<b>Alcohol Abuse</b>		
840000510	Carbohydrate deficient transferrin (CDT) Control	Serum
840000511	Ethyl Glucuronide (EtG) Control	Serum
840000512	Phosphatidyl Ethanol (PEth) Control	Serum
<b>Inflammatory Diseases</b>		
840000520	Procalcitonin (PCT) Control	Serum
840000521	Calprotectin Serum OTC Control	Serum
840000522	C-reactive Protein Control	Serum
<b>Urology</b>		
840000530	Urine standard profile, qualitative Control	Urine
840000531	Urine standard profile, quantitative Control	Urine
<b>Oncology</b>		
840000540	Prostate Specific Antigen (PSA) Control	Serum
840000541	Nuclear Matrix Protein 22 (NMP22) Urine POCT Control	Urine
<b>Metabolism &amp; Nutrition</b>		
840000550	Vitamin B12 deficient Control	Serum
<b>Liquor Diagnostics</b>		
840000560	Cerebrospinal Fluid (CSF) standard profile Control Sample	Liquor

**Further requirements? Send your inquiry via:**

[inquiry.inventdiagnostica.de](mailto:inquiry.inventdiagnostica.de)

- PRICE LIST -



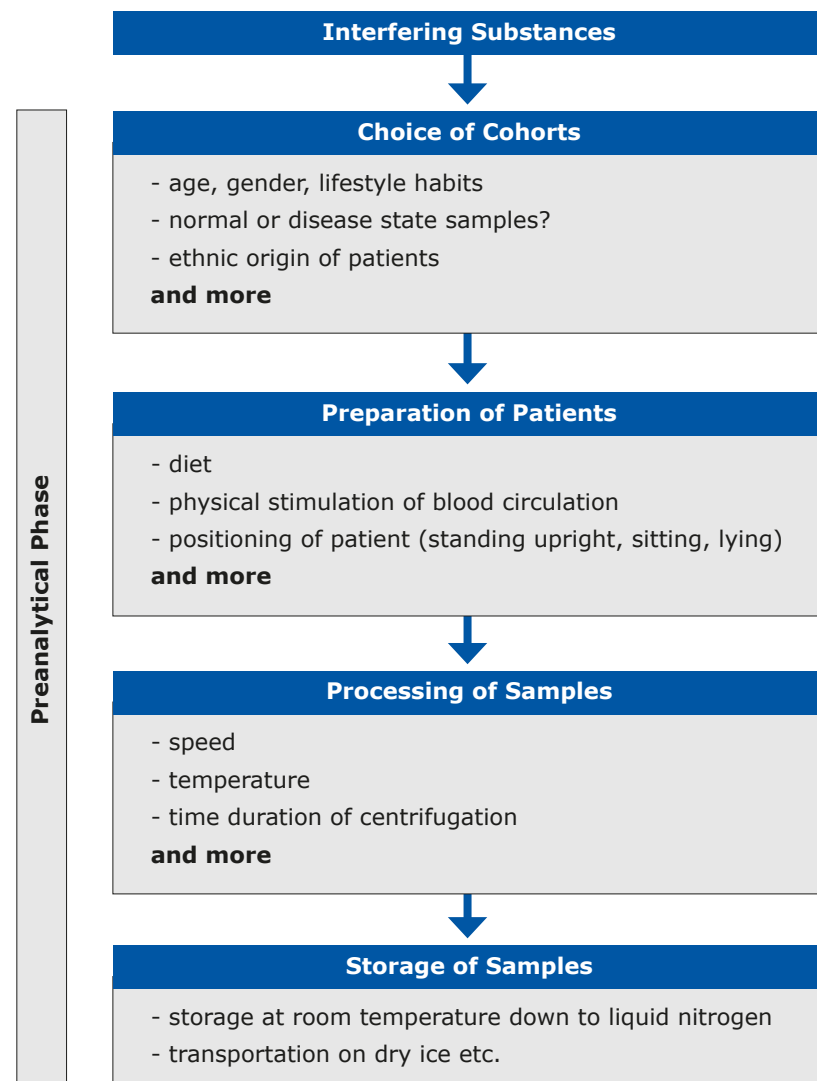
# Preanalytics – Anticoagulants & Interfering Substances

# 5

The **in.vent Panels of Preanalytics** cover a broad Range of stressed Samples, resp. Interfering Substances. The Panels are designed to be used in R&D and Quality Control Departments, mainly for study schemes regarding the Influences of different Anticoagulants and Interfering Substances on the Results of the Laboratory Testing or on Biomarkers. All Samples of the Panels of Anticoagulants are drawn under identical Conditions and donated from the identical Donor during one Single Donation.

### Examples of Interfering Substances

The generation of test results is divided into a preanalytical and an analytical phase. The preanalytical phase includes all influences that act before the measuring procedure. The analytical phase involves purely methodical and metrological conditions<sup>1</sup>.



The **in.vent** Panels are designed to be used in R&D and Quality Control Departments, mainly for study schemes regarding the Influences of different Anticoagulants and Interfering Substances on the Results of the Laboratory Testing or on Biomarkers. All Samples of the Panels of Anticoagulants are drawn under identical Conditions and donated from the identical Donor during one Single Donation.

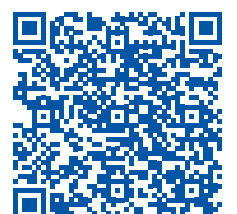
### Interfering Substances

Product No.	Trade Name	Unit
<b>Anticoagulants</b>		
810000402	Normal Human matrix Quartet: Serum OTC, K3EDTA Plasma, Lithium heparin Plasma, Citrate Plasma	10 Sets
810000403	Normal Human matrix Quartet: Serum OTC, K2EDTA Plasma, Lithium heparin Plasma, Citrate Plasma	10 Sets
810000404	Normal Human matrix Quintet: Serum OTC, K2EDTA Plasma, K3EDTA Plasma, Lithium heparin Plasma, Citrate Plasma	10 Sets
<b>Interfering Substances</b>		
810000400	Gerontology Serum OTC Panel	10 Samples
810000401	Obesity Serum OTC Panel	10 Samples
820000400	HAMA positive Serum Single Donation	150 - 250ml
820000401	HAMA high positive Serum Single Donation	150 - 250ml
820000402	HAMA positive Citrate Plasma Single Donation	450 - 850ml

**Further requirements? Send your inquiry via:**

[inquiry.inventdiagnostica.de](mailto:inquiry.inventdiagnostica.de)

- PRICE LIST -



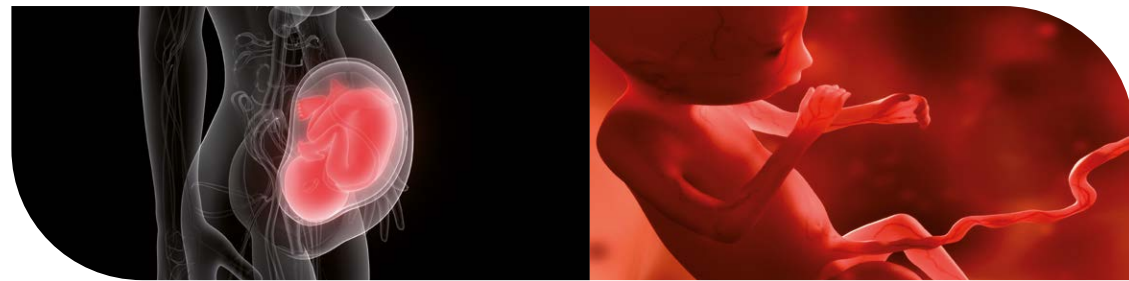
<sup>1</sup> Klinikleitfaden Labordiagnostik

# Fertility & Pregnancy

# 6

Defined hormonal states appear due to pregnancy and fertility cycles. They are suitable to monitor changing biological states and abnormalities. Hormonal pregnancy and ovulation tests are available at low costs nearly all over the world and create great sales. Nevertheless, hormone test results and their individual consequences are often a very sensitive topic and thereby must be extremely accurate. Worldwide contraception has already risen up to be a common topic. After using hormonal contraception there is a new trend of self-monitoring and understanding of autologous processes and a need of reports about the individual hormonal state.

The **in.vent** Fertility & Pregnancy materials are designed for use throughout the whole value chain of in-vitro diagnostic test kits, e. g. for R&D and Quality Control Departments. The Samples consist of native Human Bio-material with no additives. Titers are based upon Availabilities. Consecutive Donations are donated by one Donor on several occasions.



## Classification Weeks of Pregnancy

Trimester	Week of Pregnancy
1 <sup>st</sup>	1 <sup>st</sup> to 12 <sup>th</sup> week of pregnancy
2 <sup>nd</sup>	13 <sup>th</sup> to 24 <sup>th</sup> week of pregnancy
3 <sup>rd</sup>	from 25 <sup>th</sup> week of pregnancy

Product No.	Trade Name	Unit
810000500	1st trimester of pregnancy Human Serum OTC	100ml
810000501	2nd trimester of pregnancy Human Serum OTC	100ml
810000502	3rd trimester of pregnancy Human Serum OTC	100ml
810000503	Anti-Muellerian Hormone (AMH) Serum OTC Panel	Panel
810000504	Follicle stimulating hormone (FSH) Serum OTC Panel	Panel
810000505	Luteinizing Hormone (LH) Serum OTC Panel	Panel

Product No.	Trade Name	Unit
820000500	17beta-Estradiol positive Serum OTC Single Donation	1 - 10ml
820000501	1st trimester of pregnancy Human Serum OTC Single Donation	1 - 10ml
820000502	2nd trimester of pregnancy Human Serum OTC Single Donation	1 - 10ml
820000503	3rd trimester of pregnancy Human Serum OTC Single Donation	1 - 10ml
820000504	anti-Muellerian Hormone (AMH) positive Serum Single Donation	1 - 10ml
820000505	Dehydroepiandrosterone (DHEA) positive Serum Single Donation	1 - 10ml
820000506	Dehydroepiandrosterone-sulfat (DHEA-S) positive Serum Single Donation	1 - 10ml
820000507	Follicle stimulating hormone (FSH) positive Serum Single Donation	1 - 10ml
820000508	Gestational diabetes Serum OTC Single Donation	1 - 10ml
820000509	Human Amniotic Fluid Single Donation	0.5 - 1ml
820000510	Luteinizing hormone (LH) positive Serum Single Donation	1 - 10ml
820000511	Multiparous pregnancy Human Serum OTC Single Donation	1 - 10ml
820000512	Preeclampsia Serum OTC Single Donation	1 - 10ml
820000513	Pregnancy Urine Single Donation	10ml
820000514	Progesterone positive Serum OTC Single Donation	1 - 10ml
820000515	Sexual hormone binding globulin (SHBG) positive Serum Single Donation	1 - 10ml
820000516	β-Human Choriongonadotropin (β-hCG) positive Pregnancy Serum Single Donation	1 - 10ml
820000517	β-Human Choriongonadotropin (β-hCG) positive Pregnancy Urine Single Donation	10ml
820000518	Testosterone positive Serum Single Donation	1 - 10ml

Further requirements? Send your inquiry via:

[inquiry.inventdiagnostica.de](mailto:inquiry.inventdiagnostica.de)

- PRICE LIST -



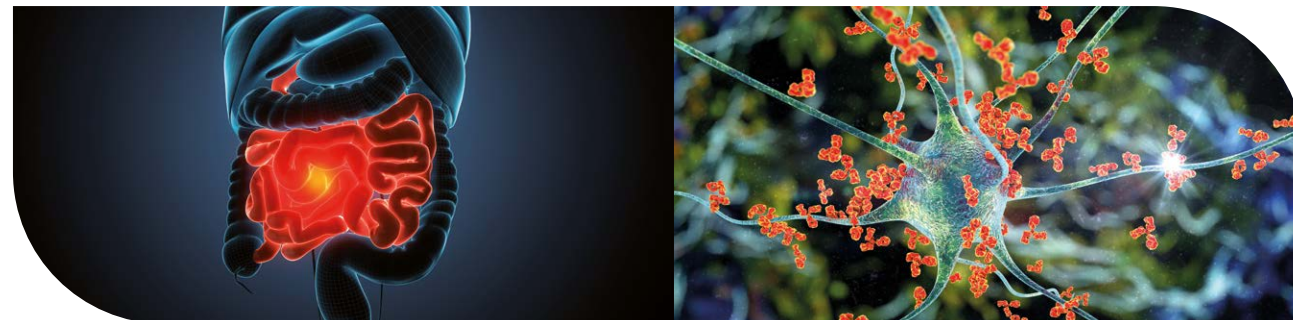


# Disease State – Autoimmune Diseases



Laboratory testing is of great value when evaluating a patient with a suspected autoimmune disease. The results can confirm a diagnosis, estimate disease severity, aid in assessing prognosis and are useful to follow disease activity. Comprehensive laboratory evaluation of a suspected autoimmune illness in conjunction with a thorough clinical evaluation provides a better understanding of a patient's immunologic disease.

The **in.vent** Bulks of Autoimmune Biomarkers and Autoimmune Diseases are designed for the use throughout the whole value chain of in-vitro diagnostic test kits, e.g. for R&D and Quality Control Departments. They are representative of different types of autoimmune diseases. The Bulks consist of native Human Biomaterial with no additives. Titers are based upon availability.



Product No.	Trade Name	Unit
820000600	Acetylcholine receptor (ACHR) antibodies positive Serum OTC Single Donation	150 - 250ml
820000601	Acetylcholine receptor (ACHR) antibodies positive Citrate Plasma Single Donation	450 - 850ml
820000603	ADAMTS-13 positive Citrate Plasma Single Donation	450 - 850ml
820000604	AMA-M2 antibodies positive Serum OTC Single Donation	150 - 250ml
820000605	AMA-M2 antibodies positive Citrate Plasma Single Donation	450 - 850ml
820000606	ANA positive Serum OTC Single Donation	150 - 250ml
820000607	ANA positive Citrate Plasma Single Donation	450 - 850ml
820000608	anti-Cyclic citrullinated peptide (a-CCP/ACPA) positive Serum OTC Single Donation	150 - 250ml
820000609	anti-Cyclic citrullinated peptide (a-CCP/ACPA) positive Citrate Plasma Single Donation	450 - 850ml
820000610	Autoimmune Hepatitis Serum OTC Single Donation	150 - 250ml
820000611	Autoimmune Hepatitis Citrate Plasma Single Donation	450 - 850ml
820000612	beta-2-Glykoprotein IgA positive Serum OTC Single Donation	150 - 250ml
820000613	beta-2-Glykoprotein IgA positive Citrate Plasma Single Donation	450 - 850ml
820000614	beta-2-Glykoprotein IgG positive Serum OTC Single Donation	150 - 250ml
820000615	beta-2-Glykoprotein IgG positive Citrate Plasma Single Donation	450 - 850ml
820000616	beta-2-Glykoprotein IgM positive Serum OTC Single Donation	150 - 250ml
820000617	beta-2-Glykoprotein IgM positive Citrate Plasma Single Donation	450 - 850ml

Product No.	Trade Name	Unit
820000618	Cardiolipin IgA positive Serum OTC Single Donation	150 - 250ml
820000619	Cardiolipin IgA positive Citrate Plasma Single Donation	450 - 850ml
820000620	Cardiolipin IgG positive Serum OTC Single Donation	150 - 250ml
820000621	Cardiolipin IgG positive Citrate Plasma Single Donation	450 - 850ml
820000622	Cardiolipin IgM positive Serum OTC Single Donation	150 - 250ml
820000623	Cardiolipin IgM positive Citrate Plasma Single Donation	450 - 850ml
820000624	Celiac Disease Serum OTC Single Donation	150 - 250ml
820000625	Celiac Disease Citrate Plasma Single Donation	450 - 850ml
820000626	dsDNA antibodies positive Serum OTC Single Donation	150 - 250ml
820000627	dsDNA antibodies positive Citrate Plasma Single Donation	450 - 850ml
820000628	Morbus Crohn Serum OTC Single Donation	150 - 250ml
820000629	Morbus Crohn Citrate Plasma Single Donation	450 - 850ml
820000630	Morbus Crohn Faeces Single Donation	100 - 250g
820000631	Multiple Sclerosis Serum OTC Single Donation	150 - 250ml
820000632	Myasthenia gravis Serum OTC Single Donation	150 - 250ml
820000633	Myasthenia gravis Citrate Plasma Single Donation	450 - 850ml
820000634	Myeloperoxidase (MPO) antibodies positive Citrate Plasma Single Donation	450 - 850ml
820000635	Pernicious Anemia (PA) Citrate Plasma Single Donation	450 - 850ml
820000636	Primary Biliary Cholangitis (PBC) Serum OTC Single Donation	150 - 250ml
820000637	Primary Biliary Cholangitis (PBC) Citrate Plasma Single Donation	450 - 850ml
820000638	Proteinase 3 (PR3) antibodies positive Citrate Plasma Single Donation	450 - 850ml
820000639	Rheumatoid Arthritis Serum OTC Single Donation	150 - 250ml
820000640	Rheumatoid Arthritis Citrate Plasma Single Donation	450 - 850ml
820000641	Rheumatoid Factor IgA positive Serum OTC Single Donation	150 - 250ml
820000642	Rheumatoid Factor IgA positive Citrate Plasma Single Donation	450 - 850ml
820000643	Rheumatoid Factor IgG positive Serum OTC Single Donation	150 - 250ml
820000644	Rheumatoid Factor IgG positive Citrate Plasma Single Donation	450 - 850ml
820000645	Rheumatoid Factor IgM positive Serum OTC Single Donation	150 - 250ml
820000646	Rheumatoid Factor IgM positive Citrate Plasma Single Donation	450 - 850ml
820000647	SS-A antibodies positive Serum OTC Single Donation	150 - 250ml
820000648	SS-A antibodies positive Citrate Plasma Single Donation	450 - 850ml
820000649	SS-B antibodies positive Serum OTC Single Donation	150 - 250ml
820000650	SS-B antibodies positive Citrate Plasma Single Donation	450 - 850ml
820000651	Systemic Lupus Erythematosus (SLE) Serum OTC Single Donation	150 - 250ml
820000652	Total Rheumatoid Factor (tRF) positive Serum OTC Single Donation	150 - 250ml
820000653	Total Rheumatoid Factor (tRF) positive Citrate Plasma Single Donation	450 - 850ml
820000654	Total Rheumatoid Factor (tRF) high positive Serum OTC Single Donation	150 - 250ml
820000655	Total Rheumatoid Factor (tRF) high positive Citrate Plasma Single Donation	450 - 850ml
820000656	U1RNP positive Citrate Plasma Single Donation	450 - 850ml
820000657	Ulcerative Colitis Serum OTC Single Donation	150 - 250ml
820000658	Ulcerative Colitis Citrate Plasma Single Donation	450 - 850ml
820000659	Ulcerative Colitis Faeces Single Donation	100 - 250g

– PRICE LIST –

Further requirements? Send your inquiry via:

[inquiry.inventdiagnostica.de](mailto:inquiry.inventdiagnostica.de)





# Disease State – Infectious Diseases



The **in.vent** Bulks of Infectious Diseases are Patient Samples tested positive for designated Infectious Diseases. These Bulks are designed to be used in R&D and Quality Control Departments. The Samples consist of native Human Biomaterial with no additives.

Product No.	Trade Name	Unit
<b>Virale Parameters</b>		
820000700	Cytomegalovirus (CMV) IgG positive Citrate Plasma Single Donation	150 - 850 ml
820000701	Cytomegalovirus (CMV) IgM positive Citrate Plasma Single Donation	150 - 850 ml
820000702	Epstein-Barr Virus Early Antigen (EBV:EA) IgG positive Citrate Plasma Single Donation	150 - 850 ml
820000703	Epstein-Barr Virus Viral Capsid Antigen (EBV: VCA) IgM positive Citrate Plasma Single Donation	150 - 850 ml
820000704	FSME IgG positive Citrate Plasma Single Donation	150 - 850 ml
820000705	FSME IgM positive Citrate Plasma Single Donation	150 - 850 ml
820000706	Hepatitis B Virus surface Antigen (HBsAg) positive Citrate Plasma Single Donation	150 - 850 ml
820000707	Hepatitis C Virus (HCV) antibodies positive Citrate Plasma Single Donation	150 - 850 ml
820000708	Hepatitis E Virus (HEV) IgM positive Citrate Plasma Single Donation	150 - 850 ml
820000709	Hepatitis E Virus (HEV) IgM high positive Citrate Plasma Single Donation	150 - 850 ml
820000710	Hepatitis E Virus (HEV) PCR positive Citrate Plasma Single Donation	150 - 850 ml
820000711	Herpes simplex virus-1 (HSV-1) IgG positive Citrate Plasma Single Donation	150 - 850 ml
820000712	Herpes simplex virus-1 (HSV-1) IgM positive Citrate Plasma Single Donation	150 - 850 ml
820000713	Herpes simplex virus-2 (HSV-2) IgG positive Citrate Plasma Single Donation	150 - 850 ml
820000714	Herpes simplex virus-2 (HSV-2) IgM positive Citrate Plasma Single Donatoin	150 - 850 ml
820000715	Human Immunodeficiency Virus-1 (HIV-1) positive Citrate Single Donation	150 - 850 ml
820000716	Human Immunodeficiency Virus-1/2 (HIV-1/2) positive Citrate Plasma Single Donation	150 - 850 ml
820000717	Human Immunodeficiency Virus-1/2 p24 (HIV-1/2 p24) positive Citrate Plasma Single Donation	150 - 850 ml
820000718	Human Immunodeficiency Virus-2 (HIV-2) positive Citrate Plasma Single Donation	150 - 850 ml
810000600	FSME positive Serum OTC Panel	50 pcs/Panel
810000601	FSME Seroconversion Serum OTC Panel	14 pcs/Panel
820000719	Influenza A IgA positive Citrate Plasma Single Donation	150 - 850 ml
820000720	Influenza A IgG positive Citrate Plasma Single Donation	150 - 850 ml
820000721	Influenza B IgG positive Citrate Plasma Single Donation	150 - 850 ml
820000722	Measles IgG positive Citrate Plasma Single Donation	150 - 850 ml
820000745	Varizella Zoster Virus (VZV) IgM high positive Citrate Plasma Single Donation	150 - 850 ml
820000746	Yellow Fever IgG positive Citrate Plasma Single Donation	150 - 850 ml
<b>Virale Parameters Swabs</b>		
820000800	Influenza A positive dry Swab	1pcs
820000801	Influenza A positive with variant information, dry Swab	1pcs
820000802	Influenza B positive dry Swab	1pcs
820000803	Influenza B positive with variant information, dry Swab	1pcs
820000804	Respiratory Syncytial Virus (RSV) positive dry Swab	1pcs
820000805	Hospitalised patient's dry Swab	1pcs

Product No.	Trade Name	Unit
<b>Bacterial Parameters</b>		
820000900	Bordetella pertussis IgG positive Citrate Plasma Single Donation	150 - 850 ml
820000901	Bordetella pertussis IgM positive Citrate Plasma Single Donation	150 - 850 ml
820000902	Bordetella pertussis IgA positive Citrate Plasma Single Donation	150 - 850 ml
820000903	Campylobacter IgM positive Citrate Plasma Single Donation	150 - 850 ml
820000904	Chlamydia pneumoniae IgA positive Citrate Plasma Single Donation	150 - 850 ml
820000905	Chlamydia pneumoniae IgG positive Citrate Plasma Single Donation	150 - 850 ml
820000906	Chlamydia pneumoniae IgM positive Citrate Plasma Single Donation	150 - 850 ml
820000907	Chlamydia trachomatis IgG positive Citrate Plasma Single Donation	150 - 850 ml
820000908	Chlamydia trachomatis IgM positive Citrate Plasma Single Donation	150 - 850 ml
820000909	Coxiella burnetii (Phase II) IgG positive Citrate Plasma Single Donation	150 - 850 ml
820000910	Coxiella burnetii (Phase II) IgM positive Citrate Plasma Single Donation	150 - 850 ml
820000911	Diphtheria IgG negative Citrate Plasma Single Donation	150 - 850 ml
820000912	Diphtheria IgG positive Citrate Plasma Single Donation	150 - 850 ml
820000913	Helicobacter pylori IgA positive Serum OTC Single Donation	150 - 250 ml
820000914	Helicobacter pylori IgG positive Serum OTC Single Donation	150 - 250 ml
820000915	Leptospira IgG positive Citrate Plasma Single Donation	150 - 850 ml
820000916	Mycoplasma pneumoniae IgG positive Citrate Plasma Single Donation	150 - 850 ml
820000917	Mycoplasma pneumoniae IgM positive Citrate Plasma Single Donation	150 - 850 ml
820000918	Mycoplasma ssp. IgA positive Citrate Plasma Single Donation	150 - 850 ml
820000919	Syphilis (Treponema pallidum) antibodies positive Citrate Plasma Single Donation	150 - 850 ml
820000920	Ureaplasma urealyticum IgG positive Citrate Plasma Single Donation	150 - 850 ml
820000921	Ureaplasma urealyticum IgM positive Citrate Plasma Single Donation	150 - 850 ml
<b>Parasitical Parameters</b>		
820001000	Ascaris lumbricoides IgG positive Citrate Plasma Single Donation	150 - 850 ml
820001001	Echinococcus IgG positive Citrate Plasma Single Donation	150 - 850 ml
820001002	Entamoeba histolytica IgG positive Citrate Plasma Single Donation	150 - 850 ml
820001003	Fasciola hepatica IgG positive Citrate Plasma Single Donation	150 - 850 ml
820001004	Filaria antibodies positive Citrate Plasma Single Donation	150 - 850 ml
820001005	Malaria (Plasmodium ssp.) antibodies positive Citrate Plasma Single Donation	150 - 850 ml
820001006	Malaria Antigen positive Citrate Plasma Single Donation	150 - 850 ml
820001007	Schistosoma IgG positive Citrate Plasma Single Donation	150 - 850 ml
820001008	Strongyloides IgG positive Citrate Plasma Single Donation	150 - 850 ml
820001009	Taenia solium IgG positive Citrate Plasma Single Donation	150 - 850 ml
820001010	Toxocara canis IgG positive Citrate Plasma Single Donation	150 - 850 ml
820001011	Toxoplasma gondii IgA positive Citrate Plasma Single Donation	150 - 850 ml
820001012	Toxoplasma gondii IgG positive Citrate Plasma Single Donation	150 - 850 ml
820001013	Toxoplasma gondii IgM positive Citrate Plasma Single Donation	150 - 850 ml
820001014	Toxoplasma gondii IgM high positive Citrate Plasma Single Donation	150 - 850 ml
<b>Fungale Parameters</b>		
820001100	Candida IgG positive Citrate Plasma Single Donation	150 - 850 ml
<b>Protozoal Parameters</b>		
820001110	Leishmania IgG positive Citrate Plasma Single Donation	150 - 250ml

Further requirements? Send your inquiry via:

[inquiry.inventdiagnostica.de](mailto:inquiry.inventdiagnostica.de)

– PRICE LIST –



# Disease State – Thyroid Diseases



Worldwide hypothyroidism and goiter are the most common forms due to dietary iodine deficiency and affects 3-10% of adults. One third of the world's population currently lives in areas of low dietary iodine levels. In regions of severe iodine deficiency, the prevalence of goiter is up to 80%. In areas without iodine-deficiency, autoimmune diseases as Hashimoto's thyroiditis have the highest prevalence (1-2%).

For Hyperthyroidism Graves' Disease is the most common type with a prevalence of 0,5-3%. Although thyroid nodules are common, thyroid cancer is rare though it is the most common endocrine tumor and makes up greater than 90% of all cancers of the endocrine glands.

The **in.vent** Bulks of Biomarkers for Thyroid Diseases are designed for the use throughout the whole value chain of in-vitro diagnostic test kits, e.g. for R&D and Quality Control Departments. The samples consist of native Human Biomaterial with no additives.



Product No.	Trade Name	Unit
810001100	Anti-Thyroid Peroxidase (anti-TPO) positive Citrate Plasma, Pool	1L
810001101	Anti-Thyroid-Stimulating Hormone receptor (TRAb) high positive Serum, Pool	1L
810001102	Anti-Thyroid-Stimulating Hormone receptor (TRAb) high positive Serum, converted Pool	1L
820002000	anti-Thyroglobulin (anti-Tg) positive Serum Single Donation	150 - 250ml
820002001	anti-Thyroglobulin (anti-Tg) high positive Serum Single Donation	150 - 250ml
820002002	anti-Thyroglobulin (anti-Tg) negative Serum Single Donation	150 - 250ml
820002003	anti-Thyroglobulin (anti-Tg) positive Citrate Plasma Single Donation	450 - 850ml
820002004	anti-Thyroglobulin (anti-Tg) high positive Citrate Plasma Single Donation	450 - 850ml
820002005	anti-Thyroglobulin (anti-Tg) negative Citrate Plasma Single Donation	450 - 850ml
820002006	anti-Thyroid Peroxidase (anti-TPO) positive Serum Single Donation	150 - 250ml
820002007	anti-Thyroid Peroxidase (anti-TPO) high positive Serum Single Donation	150 - 250ml
820002008	anti-Thyroid Peroxidase (anti-TPO) negative Serum Single Donation	150 - 250ml
820002009	anti-Thyroid Peroxidase (anti-TPO) positive Citrate Plasma Single Donation	450 - 850ml
820002010	anti-Thyroid Peroxidase (anti-TPO) high positive Citrate Plasma Single Donation	450 - 850ml
820002011	anti-Thyroid Peroxidase (anti-TPO) negative Citrate Plasma Single Donation	450 - 850ml
820002012	Free Thyroxine (fT4) decreased Serum OTC Single Donation	150 - 250ml
820002013	Free Thyroxine (fT4) increased Serum OTC Single Donation	150 - 250ml
820002014	Free Triiodothyronine (fT3) decreased Serum OTC Single Donation	150 - 250ml
820002015	Free Triiodothyronine (fT3) increased Serum OTC Single Donation	150 - 250ml
820002016	Graves' Disease Serum OTC Single Donation	150 - 250ml
820002017	Hashimoto's Thyroiditis Serum OTC Single Donation	150 - 250ml
820002018	Hyperthyroidism Serum OTC Single Donation	150 - 250ml
820002019	Hypothyroidism Serum OTC Single Donation	150 - 250ml
820002020	Thyroid Receptor Antibodies (TRAb) positive Serum Single Donation	150 - 250ml
820002021	Thyroid Receptor Antibodies (TRAb) high positive Serum Single Donation	150 - 250ml
820002022	Thyroid Receptor Antibodies (TRAb) negative Serum Single Donation	150 - 250ml
820002023	Thyroid Receptor Antibodies (TRAb) positive Citrate Plasma Single Donation	450 - 850ml
820002024	Thyroid Receptor Antibodies (TRAb) high positive Citrate Plasma Single Donation	450 - 850ml
820002025	Thyroid Receptor Antibodies (TRAb) negative Citrate Plasma Single Donation	450 - 850ml
820002026	Thyroid stimulating hormone (TSH) decreased Serum OTC Single Donation	150 - 250ml
820002027	Thyroid stimulating hormone (TSH) increased Serum OTC Single Donation	150 - 250ml
820002028	Total Thyroxine (tT4) decreased Serum OTC Single Donation	150 - 250ml
820002029	Total Thyroxine (tT4) increased Serum OTC Single Donation	150 - 250ml
820002030	Total Triiodothyronine (tT3) decreased Serum OTC Single Donation	150 - 250ml
820002031	Total Triiodothyronine (tT3) increased Serum OTC Single Donation	150 - 250ml

**Further requirements? Send your inquiry via:**

[inquiry.inventdiagnostica.de](mailto:inquiry.inventdiagnostica.de)

– PRICE LIST –



# Disease State – Allergy



The **in.vent** Bulks of Allergy are designed for the use throughout the whole value chain of in-vitro diagnostic test kits, e.g. for R&D and Quality Control Departments. They are representative for different Allergens. The samples consist of native Human Biomaterial with no additives.

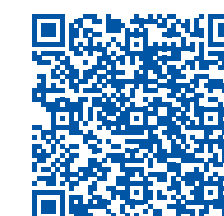
Product No.	Trade Name	Unit
<b>total IgE</b>		
820001200	total IgE positive Serum OTC Single Donation	150 - 250ml
820001201	total IgE high positive Serum OTC Single Donation	150 - 250ml
820001202	total IgE very high positive Serum OTC Single Donation	150 - 250ml
820001203	total IgE positive Citrate Plasma Single Donation	450 - 850ml
820001204	total IgE high positive Citrate Plasma Single Donation	450 - 850ml
820001205	total IgE very high positive Citrate Plasma Single Donation	450 - 850ml



Product No.	Trade Name	Unit
<b>special IgE</b>		
820001210	sIgE d1 Dermatophagoides pteronyssinus positive Serum OTC Single donation	150 - 250ml
820001211	sIgE d202 rDer p1 D. pteronyssinus positive Serum OTC Single donation	150 - 250ml
820001212	sIgE d203 rDer p2 D. pteronyssinus positive Serum OTC Single Donation	150 - 250ml
820001213	sIgE e1 Cat dander positive Serum OTC Single donation	150 - 250ml
820001214	sIgE e101 rCan f1 Dog Lipocalin positive Serum OTC Single Donation	150 - 250ml
820001215	sIgE e102 rCan f2 Dog Lipocalin positive Serum OTC Single Donation	150 - 250ml
820001216	sIgE e5 Dog dander positive Serum OTC Single Donation	150 - 250ml
820001217	sIgE f10 Sesame seed positive Serum OTC Single Donation	150 - 250ml
820001218	sIgE f13 Peanut positive Serum OTC Single donation	150 - 250ml
820001220	sIgE f17 Hazel nut positive Serum OTC Single donation	150 - 250ml
820001221	sIgE f2 Cow's milk positive Serum OTC Single Donation	150 - 250ml
820001222	sIgE f24 Shrimp positive Serum OTC Single donation	150 - 250ml
820001223	sIgE f3 Fish (cod) positive Serum OTC Single donation	150 - 250ml
820001224	sIgE f4 Wheat positive Serum OTC Single donation	150 - 250ml
820001225	sIgE f420 Pru p3 positive Serum OTC Single donation	150 - 250ml
820001226	sIgE f423 Ara h2 positive Serum OTC Single donation	150 - 250ml
820001227	sIgE f95 Peach positive Serum OTC Single Donation	150 - 250ml
820001228	sIgE g2 Bermuda grass positive Serum OTC Single Donation	150 - 250ml
820001229	sIgE g6 Timothy positive Serum OTC Single donation	150 - 250ml
820001230	sIgE i1 Honey bee venom positive Serum OTC Single donation	150 - 250ml
820001231	sIgE i209 rVes v5 Vespula positive Serum OTC Single Donation	150 - 250ml
820001232	sIgE i3 Common wasp venom positive Serum OTC Single donation	150 - 250ml
820001233	sIgE k82 Latex positive Serum OTC Single donation	150 - 250ml
820001234	sIgE m6 Alternaria alternata positive Serum OTC Single donation	150 - 250ml
820001235	sIgE t215 Bet v1 positive Serum OTC Single donation	150 - 250ml
820001236	sIgE t3 Common Silver Birch positive Serum OTC Single donation	150 - 250ml
820001238	sIgE w1 Common ragweed positive Serum OTC Single donation	150 - 250ml

**Further requirements? Send your inquiry via:**  
[inquiry.inventdiagnostica.de](mailto:inquiry.inventdiagnostica.de)

– PRICE LIST –



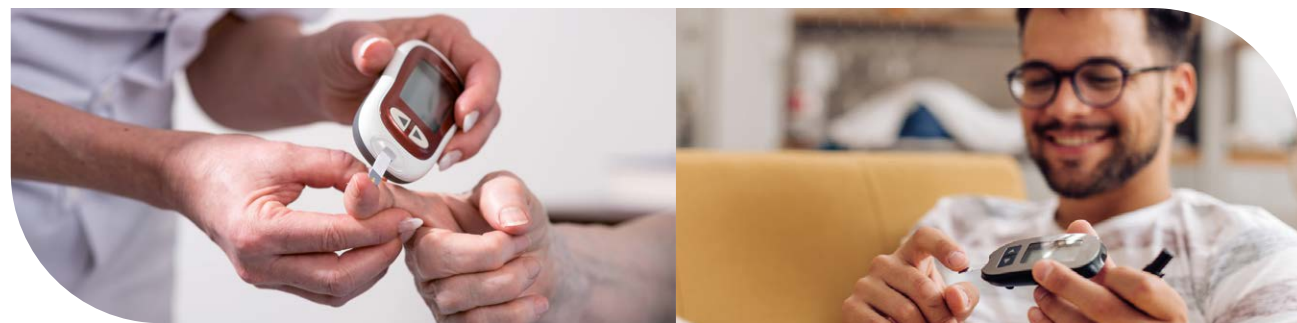


# Disease State – Diabetes



Currently, an estimated 425 million individuals globally suffer from diabetes mellitus, a number projected by the International Diabetes Federation (IDF) to surge to approximately 629 million by 2045. This rapid increase underscores the urgent need for advanced diagnostic solutions to manage and mitigate the impact of this chronic disease.

Responding to this critical need, the **in.vent** material of Biomarkers of Diabetes Diseases have been meticulously developed for comprehensive application across the entire value chain of in-vitro diagnostic test kits, e.g. for R&D and Quality Control Departments. The products consist of native Human Biomaterial with no additives.



Product No.	Trade Name	Unit
820001300	Diabetes Type I Serum OTC Single Donation	150 - 250ml
820001301	Diabetes Type I Urine Single Donation	10ml
820001302	Diabetes Type II Serum OTC Single Donation	150 - 250ml
820001303	Diabetes Type II Urine Single Donation	10ml
820001304	GAD65 antibodies positive Serum OTC Single Donation	150 - 250ml
820001305	Insulin autoantibodies (IAA) positive Serum OTC Single Donation	150 - 250ml
820001306	Islet cell autoantibodies (ICA) positive Serum OTC Single Donation	150 - 250ml
820001307	Tyrosinkinase 2A antibodies positive Serum OTC Single Donation	150 - 250ml
820001308	Zink-8-Transporter antibodies positive Serum OTC Single Donation	150 - 250ml
840000201	Diabetes Type I Serum, Pool	on request
840000202	Diabetes Type II Serum, Pool	on request
840000203	HbA1c measured whole blood Single Donation	on request

**Further requirements? Send your inquiry via:**

[inquiry.inventdiagnostica.de](mailto:inquiry.inventdiagnostica.de)

# Disease State – Inflammation



A huge variety of inflammatory parameters is available for diagnostic of inflammatory diseases. Differentiated immunological tests give detailed information about activity and state of the immune system. In contrast for routine diagnostics and disease monitoring especially for septic patients and serious infections only few laboratory parameters are suitable for clinical inflammatory monitoring.

The **in.vent** Biomarkers for Inflammation are designed for the use throughout the whole value chain of in-vitro diagnostic test kits, e.g. for R&D and Quality Control Departments. The Bulks consist of native Human Biomaterial with no additives.



Product No.	Trade Name	Unit
820002100	Calprotectin positive Serum Single Donation	150 - 250ml
820002101	C-reactive Protein (CRP) positive Serum Single Donation	150 - 250ml
820002102	C-reactive Protein (CRP) high positive Serum Single Donation	150 - 250ml
820002103	C-reactive Protein (CRP) negative Serum Single Donation	150 - 250ml
820002104	Procalcitonin (PCT) positive Serum Sample	1ml
820002105	Procalcitonin (PCT) high positive Serum Sample	1ml
820002106	Serumamyloid A (SAA) positive Citrate Plasma Single Donation	450 - 850ml
820002107	Serumamyloid A (SAA) high positive Citrate Plasma Single Donation	450 - 850ml

**Further requirements? Send your inquiry via:**

[inquiry.inventdiagnostica.de](mailto:inquiry.inventdiagnostica.de)

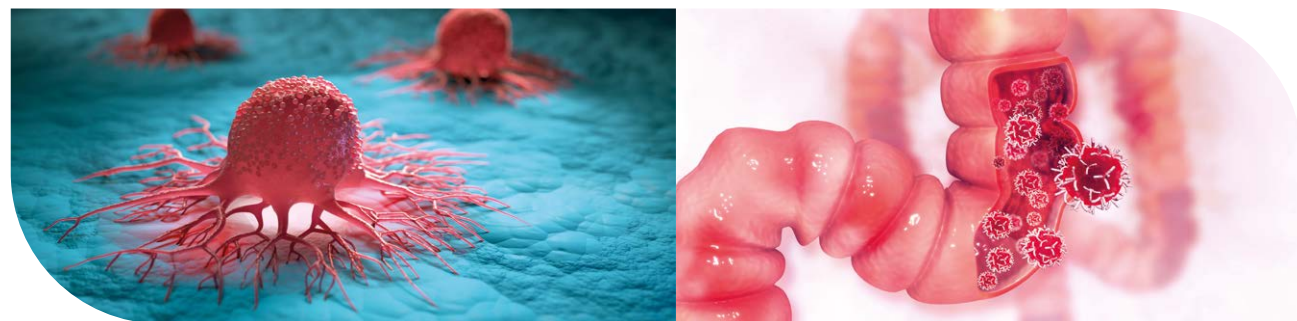
– PRICE LIST –



# Disease State – Oncology



The **in.vent** Small Volume Specimens of Oncology Biomarkers are designed for the use throughout the whole value chain of in-vitro diagnostic test kits, e. g. for R&D and Quality Control Departments. The entire range of Laboratory Test Results is represented within the Panels. The Samples consist of native Human Biomaterial with no additives.



Product No.	Trade Name	Unit
810003100	Alpha-1-Fetoprotein (AFP) Serum Panel	100 pcs/Panel
820002200	Alpha-1-Fetoprotein (AFP) positive Serum OTC Sample	1ml
820002201	Breast cancer Serum OTC Sample	1ml
820002202	Cancer Antigen 15-3 (CA 15-3) positive Serum OTC Sample	1ml
820002203	Cancer-Antigen 125 (CA 125) positive Serum OTC Sample	1ml
820002204	Cancer-Antigen 19-9 (CA 19-9) positive Serum OTC Sample	1ml
820002205	Carcino Embryonic Antigen (CEA) positive Serum OTC Sample	1ml
820002206	Carcino Embryonic Antigen (CEA) positive Serum OTC Sample	1ml
820002207	Colon carcinoma Serum OTC Sample	1ml
820002208	free Prostate Specific Antigen (fPSA) positive Serum OTC Sample	1ml
820002209	Liver Cancer Serum OTC Sample	1ml
820002210	Lung carcinoma Serum OTC Sample	1ml
820002211	Neuron specific enolase (NSE) positive Serum OTC Sample	1ml
820002212	Prostate Specific Antigen (PSA) positive Serum OTC Sample	1ml

**Further requirements? Send your inquiry via:**

[inquiry.inventdiagnostica.de](mailto:inquiry.inventdiagnostica.de)

– PRICE LIST –



# Disease State – Drugs of Abuse



The **in.vent** Human biomaterials of drug abuse and drug intake are designed for the use throughout the whole chain of in-vitro diagnostic test kits, e.g. for R&D and Quality Control Departments. The Samples consist of native Human Biomaterial with no additives.

Product No.	Trade Name	Unit
<b>Serum – Plasma</b>		
820002300	Carbohydrate-Deficient-Transferrin (CDT) positive Serum OTC Single donation	150 - 250 ml
820002301	Carbohydrate-Deficient-Transferrin (CDT) high positive Serum OTC Single donation	150 - 250 ml
820002302	Carbohydrate-Deficient-Transferrin (CDT) very high positive Serum OTC Single donation	150 - 250 ml
820002303	Carbohydrate-Deficient-Transferrin (CDT) positive Citrate Plasma Single donation	450 - 850 ml
820002304	Carbohydrate-Deficient-Transferrin (CDT) high positive Citrate Plasma Single donation	450 - 850 ml
820002305	Carbohydrate-Deficient-Transferrin (CDT) very high positive Citrate Plasma Single donation	450 - 850 ml
840000252	Amphetamine positive Serum Single Donation	1 - 100ml
840000253	Benzodiazepines positive Serum Single Donation	1 - 100ml
840000256	Cocaine positive Serum Single Donation	1 - 100ml
840000257	Ethyl Glucuronid (EtG) positive Human Serum Single Donation	150 - 250ml
840000258	Fentanyl positive Serum Single Donation	1 - 100ml
840000259	Normal Human Serum OTC, abstinent patients Single Donation	150 - 250ml
840000260	Opiates positive Serum Single Donation	1 - 100ml
840000261	Phosphatidylethanol (PEth) positive Serum Single Donation	150 - 250ml
840000262	Tetrahydrocannabinol (THC) positive Serum Single Donation	1 - 100ml
840000263	Tramadol positive Serum Single Donation	1 - 100ml
840000264	Tricyclic antidepressants positive Serum Single Donation	1 - 100ml
<b>Urine</b>		
840000265	Amphetamine positive Urine Single Donation	10ml
840000266	Benzodiazepines positive Urine Single Donation	10ml
840000267	Cocaine positive Urine Single Donation	10ml
840000268	Ethyl Glucuronid (EtG) positive Human Urine Single Donation	10ml
840000269	Fentanyl positive Urine Single Donation	10ml
840000270	Opiates positive Urine Single Donation	10ml
840000271	Tetrahydrocannabinol (THC) positive Urine Single Donation	10ml
840000272	Tramadol positive Urine Single Donation	10ml
840000273	Tricyclic antidepressants positive Urine Single Donation	10ml

**Further requirements? Send your inquiry via:**

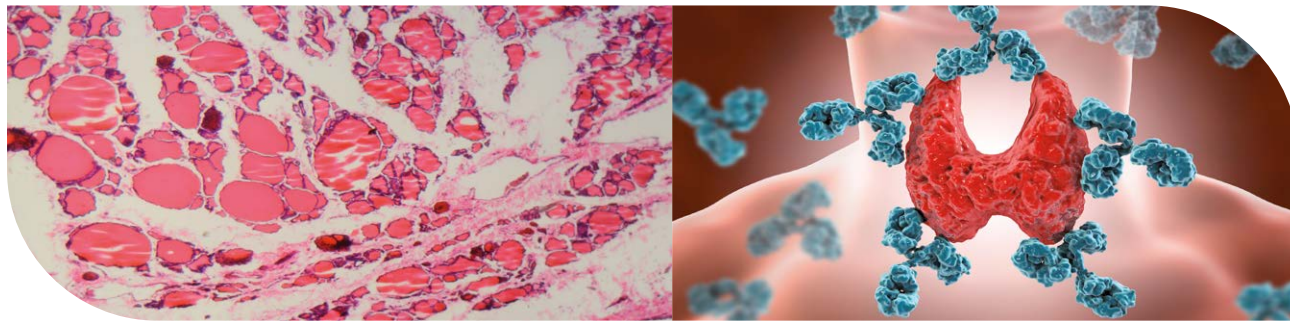
[inquiry.inventdiagnostica.de](mailto:inquiry.inventdiagnostica.de)



# Disease State – Human Tissues & Specialities

# 8

**in.vent** provides raw Human Materials for further processing such as tissues or extracts and special matrices such as saliva or application-specific matrices such as urine or faeces. All Tissues & Specialities are of the highest quality and offered in a routine and professional manner for individual diagnostic scopes and development of smart new assays.



Product No.	Trade Name	Unit
<b>Tissues</b>		
820002400	Human frozen Thyroid Tissue Sample	1 - 100g
840000332	FFPE Human Tumour Tissue Sample	on request
840000333	Human frozen Liver Tissue Sample	on request
840000334	Human frozen Pancreatic Tissue Sample	on request
<b>Specialties</b>		
810001200	Cerebrospinal fluid (CSF)	25ml or 250ml
810001201	Immunoglobulin depleted Human Serum OTC	20ml or 100ml
810001202	Steroid depleted Human Serum OTC	20ml or 100ml
840000335	Normal Human Blood cell lysate	on request

**Further requirements? Send your inquiry via:**

[inquiry.inventdiagnostica.de](mailto:inquiry.inventdiagnostica.de)

– PRICE LIST –



## Index

**A**

Allergy ..... 28, 40  
 Alpha-1-Fetoprotein ..... 44  
 Ascaris ..... 37  
 Assay ..... 7, 8, 26, 27, 46  
 Autoimmune Diseases ..... 34, 38

**B**

Bordetella pertussis ..... 37  
 Bulks ..... 8, 22, 23, 24, 34, 36, 37,  
 .....38, 40, 41, 42, 43

**C**

Cancer ..... 38, 39, 44, 45  
 Cancer-Antigen 125 ..... 44  
 Cancer-Antigen 19-9 ..... 44  
 Candida ..... 32  
 Carcino Embryonic Antigen ..... 37  
 CCP ..... 44  
 CDT ..... 28, 45  
 Chlamydia pneumoniae ..... 37  
 Chlamydia trachomatis ..... 37  
 Citrate Plasma ..... 12, 21, 23, 25, 31, 34, 35,  
 ..... 36, 37, 39, 40, 43, 45  
 Clinical Services ..... 14, 15, 18, 19  
 Clinical Studies .....6, 7, 12, 13, 14, 15  
 Company ..... 6  
 Contact ..... 4  
 Coxiella ..... 37  
 Cytomegalovirus ..... 36

**D**

Data Management ..... 15  
 Delivery ..... 8, 21  
 Diabetes ..... 12, 27, 33, 42  
 Diphtheria ..... 37  
 Disease State ..... 8, 12, 30, 34, 35, 36, 37,  
 ..... 38, 39, 40, 41, 42, 43, 44, 45, 46  
 Drugs of Abuse ..... 45

**E**

Echinococcus ..... 37  
 Entamoeba ..... 37  
 Epstein-Barr Virus Viral ..... 36

**F**

Faeces ..... 12, 23, 26, 27, 28, 35, 46  
 Fasciola hepatica ..... 37  
 Fertility ..... 27, 32, 33  
 Filaria ..... 37

**G**

Glomerulonephritis ..... 27

**H**

HCV ..... 16, 17, 18, 20, 26, 36  
 Hepatitis B Virus surface ..... 36  
 Hepatitis C Virus ..... 36  
 Herpes simplex Virus ..... 36  
 HIV II ..... 20, 26  
 HIV I ..... 20, 26  
 HIV I/II ..... 26  
 Hormones ..... 11, 21, 27  
 HSV-1 ..... 36  
 HSV-2 ..... 36

**I**

Infectious Diseases ..... 36, 37  
 Inhalation ..... 28  
 Interfering Substances ..... 17, 30, 31  
 ISO 13485 ..... 6, 7, 14, 15  
 ISO 9001 ..... 6, 7, 14, 15

**K**

K2EDTA ..... 12, 23, 31  
 K3EDTA ..... 12, 23, 31

**L**

Liquid nitrogen ..... 30  
 Lithium Heparin Plasma ..... 21, 31

**M**

Malaria ..... 37  
 Measles ..... 27, 36  
 Mumps ..... 27  
 Mycoplasma pneumoniae ..... 37

**N**

Normals ..... 20, 21, 22, 23

**O**

Oncology ..... 28, 44

**P**

Panel ..... 8, 20, 30, 31, 32, 36,  
 ..... 44 27, 30, 31, 38  
 Plasma ..... 11, 12, 20, 21, 23, 24, 27, 28,  
 .....31, 34, 35, 36, 37, 39, 40, 43, 45  
 Plasmapheresis ..... 20  
 Pool .....8, 10, 11, 22, 23, 24, 25, 39, 42  
 Preanalytics ..... 12, 30, 31  
 Pregnancy ..... 12, 28,32, 33  
 Procalcitonin ..... 28, 43  
 Project Planning ..... 14, 15  
 Prostate Specific Antigen ..... 26, 28, 44

**Q**

Quality Control ..... 6, 20, 24, 26, 27, 28, 29, 30, 31,  
 .....32, 33, 34, 35, 36, 37, 38, 39,  
 .....40, 41, 43, 44, 45

**R**

Rheumatoid Arthritis ..... 23, 30, 31

**S**

Serum ..... 8, 10, 11, 12, 22, 23, 24, 25, 26,  
 .....27, 28, 31, 32, 33, 34, 35, 36, 37,  
 .....38, 39, 40, 41, 42, 43, 44, 45, 46  
 Services ..... 10, 11, 14, 15, 18, 19  
 Sodium Fluoride ..... 21  
 Storage ..... 32, 33  
 Strongyloides ..... 37  
 Syphilis ..... 20, 37

**T**

Taenia ..... 37  
 Tg ..... 28, 39  
 Thyroid ..... 8, 27, 38, 39, 46  
 Tissue ..... 6, 7, 8, 9, 10, 46  
 Toxocara canis ..... 37  
 Toxoplasma gondii ..... 37  
 TPO ..... 39  
 TSH ..... 39

**U**

Ureaplasma urealyticum ..... 37

**V**

Vasculitis ..... 27

**W**

Whole Blood ..... 8, 12, 21, 28, 42

## Imprint

All content, photos and images are owned by in.vent Diagnostica GmbH and may not be replicated or published without prior written permission.

### **in.vent Diagnostica GmbH**

Neuendorfstr. 17  
16761 Hennigsdorf

Phone: +49 (0)3302 55 199 0  
Fax: +49 (0)3302 55 199 999  
email: info@inventdiagnostica.de

Management: Dr. Jörg-M. Hollidt  
Phone: +49 (0)3302 55 199 100  
email: jm.hollidt@inventdiagnostica.de

Commercial register: HRB 4590 Neuruppin  
Vat number: DE 194693616

Photos: in.vent Diagnostica,  
P\_Wei/iStock, undefined/iStock, aydinmutlu/iStock, PredragImages/iStock,  
denissimonov/Adobe Stock, ashtproductions/Adobe Stock, michaeljung/Adobe Stock,  
milkovasa/Adobe Stock, magicmine/iStock, selvanegra/iStock, BlackJack3D/iStock,  
Dr\_Microbe/iStock. unlimited3d/Adobe Stock, Kateryna\_Kon/Adobe Stock, interstid/  
Adobe Stock, vchalup/Adobe Stock, peterschreiber.media/Adobe Stock, Ezume  
Images/Adobe Stock, Christoph Burgstedt/Adobe Stock, Carsten Stolze/Adobe Stock,  
raimund14/Adobe Stock, dehweh/Adobe Stock, weisschr/iStock

Layout/Satz: mediendesign : kai royer, Berlin

Druck: WIRmachenDRUCK GMBH

# Human Biomaterials



**made in germany**



**Co-funded by  
the European Union**



CA HB 2406